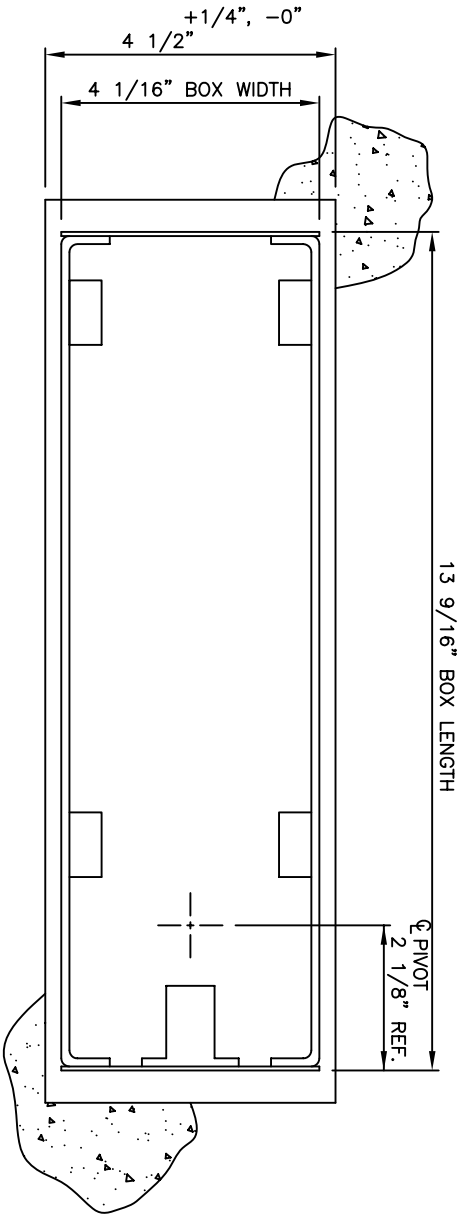


HOLD-OPEN POSITIONING VALVE
USE 7/8" WRENCH TO ADJUST HOLD
OPEN POSITION FROM 75° TO 105°

FIGURE 1 CLOSER ADJUSTMENTS
FULL SIZE

VALVE FOR LATCHING SPEED (0° TO 80°)
WIND SCREW IN TO SLOW DOOR DOWN
WIND SCREW OUT TO SPEED DOOR UP
IMPORTANT: DO NOT TURN OUTER SCREW



FLUSH WITH FINISHED FLOOR OR BELOW
NOTE: CLOSER HEIGHT ADJUSTMENT IS
UP ONLY (+ 3/16" MAX)

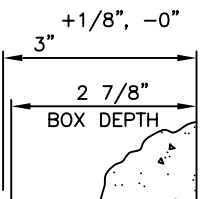


FIGURE 2 SUGGESTED BOX PREP DIMENSIONS
N.T.S.

METAL LEVELING SHIMS
AS REQ'D. (BY OTHERS)

LINE OF FINISHED FLOOR
SEE CUSTOMER DRAWING

GENERAL INSTRUCTIONS

- (1) PREP BOX OPENING PER FIGURE 2
 - (2) INSTALL BOX INTO OPENING, CLOSER SHOULD BE AT CENTER OF ADJUSTMENTS.
 - (3) SHIM BOX FLUSH WITH FINISHED FLOOR
 - (4) USE PLUMB BOB FROM TOP PIVOT TO ALIGN CLOSER
 - (5) GROUT BOX USING NON-SHRINKING OR EXPANDING GROUT
 - (6) INSTALL DOOR PER INSTRUCTIONS AFTER DOOR IS INSTALLED.
 - (7) LINE UP DOOR WITH ADJACENT DOORS/SIDELITES
 - (8) LOOSEN SCREWS "A" & "B" & MOVE CLOSER FROM SIDE TO SIDE
 - (9) ADJUST LEADING END OF DOOR IN/OUT
 - (10) LOOSEN SCREW "B" & SLIGHTLY LOOSEN SCREWS "A" - MOVE LEADING END OF CLOSER FROM SIDE TO SIDE
 - (9) ADJUST HEIGHT OF DOOR
 - (9) LOOSEN SCREWS "A" - WIND IN SCREWS "C" TO RAISE DOOR - RE-TIGHTEN SCREWS "A" - LOOSEN SCREWS "C" - LEVEL CLOSER BY WINDING IN SCREWS "D" - RE-TIGHTEN SCREWS "B"
 - (10) ADJUST GAPS BETWEEN ADJACENT DOORS/SIDELITE
 - (10) LOOSEN SCREWS "A" & "B" SLIGHTLY - MOVER CLOSER FROM END TO END
 - (11) ADJUST CLOSING SPEED & HOLD-OPEN /DELAYED ACTION
 - (11) TURN VALVE SCREWS AS INDICATED ABOVE
- TIGHTEN ALL SCREWS AFTER ADJUSTMENTS ARE MADE**

TOLERANCES: DECIMALS FRACTIONS
UNLESS OTHERWISE SPECIFIED

NO.	REV.	DESCRIPTION	DATE	BY	CHK.
A	REV. AND REPAIRMAN		11/03/98	RIZZO	-
B	REPAIR ON CAD		1/13/03	KC	-
REVISIONS					

BLUMCRRAFT OF PITTSBURGH
DRAWN BY: DUD 11/5/92
CHECKED BY: AS NOTED

INSTALLATION & ADJUSTMENT INSTRUCTIONS FOR
BLUMCRRAFT CEMENT CASE WITH DORMA BTS-80
FLOOR CLOSER
JOB NUMBER: DWG. NO. NS-817
SHEET 1 OF 1