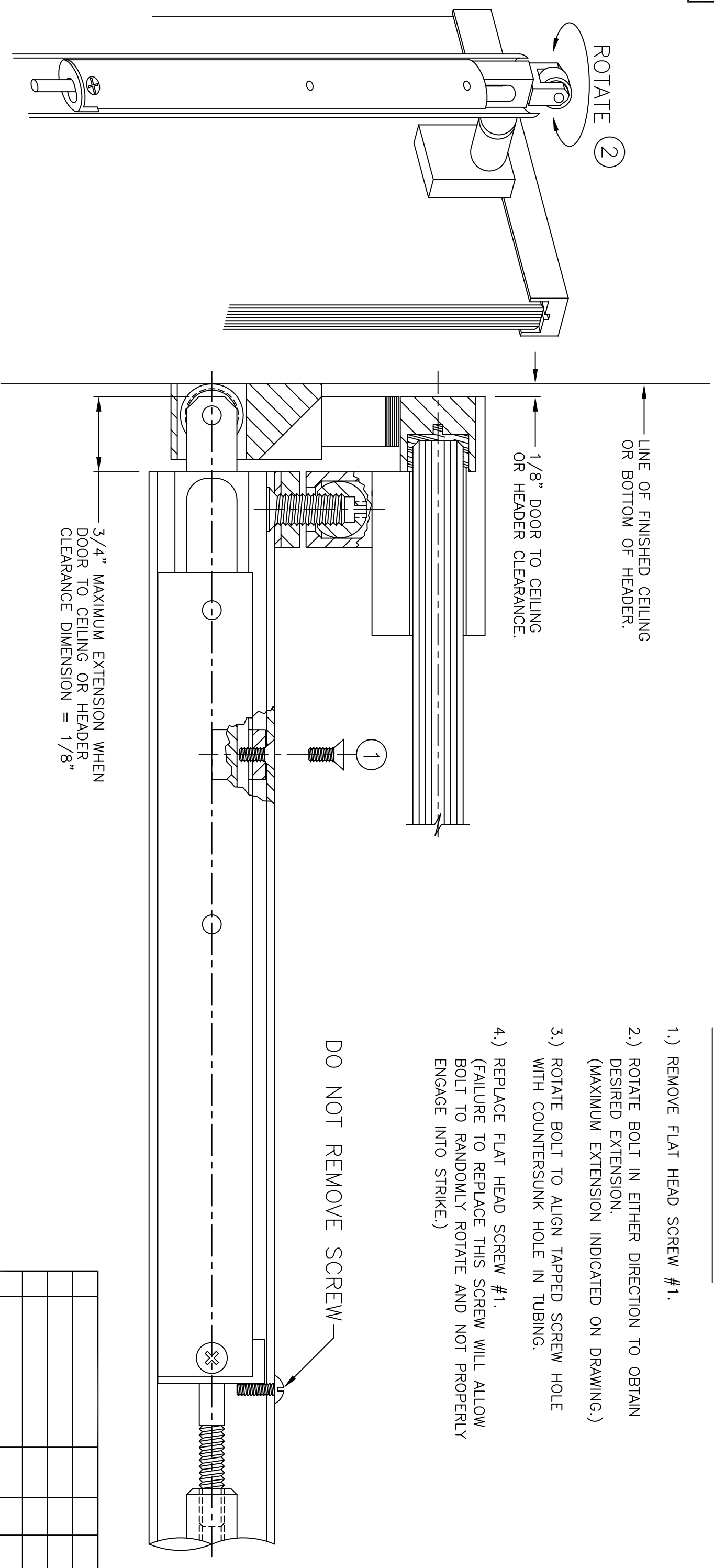


TO ACHIEVE PROPER ENGAGEMENT OF BOLT INTO STRIKE:

- 1.) REMOVE FLAT HEAD SCREW #1.
- 2.) ROTATE BOLT IN EITHER DIRECTION TO OBTAIN DESIRED EXTENSION. (MAXIMUM EXTENSION INDICATED ON DRAWING.)
- 3.) ROTATE BOLT TO ALIGN TAPPED SCREW HOLE WITH COUNTERSUNK HOLE IN TUBING.
- 4.) REPLACE FLAT HEAD SCREW #1. (FAILURE TO REPLACE THIS SCREW WILL ALLOW BOLT TO RANDOMLY ROTATE AND NOT PROPERLY ENGAGE INTO STRIKE.)

DO NOT REMOVE SCREW



3/4" MAXIMUM EXTENSION WHEN DOOR TO CEILING OR HEADER CLEARANCE DIMENSION = 1/8"

FOR OLD CONSTRUCTION SEE NS-718

TOLERANCES: +.005 - .005 DECIMALS + 1/64 - 1/64 FRACTIONS UNLESS OTHERWISE SPECIFIED

REVISIONS	DATE	DN	CH
A	8/22/00	CK	TR
REDRAWN ON AutoCAD			

Blumcraft OF PITTSBURGH

BOLT ADJUSTMENT ON PANIC HOUSING H-100

DWG. NO. NS-831

DRAWN BY
CHECKED BY
SCALE